



Armaan Essa
0828088886
armaan@choprop.co.za

Contact Choprop Sales

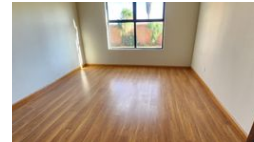
0126534444
0126534444

146 Willem Botha Street
Wierda Park
0157



SOLE MANDATE

Web Ref RL14398



POA

3 3.5 2

WHERE LUXURY MEETS MODERNITY - YOUR NEXT NEW HOME AWAITS! CHRISTOBURG / ERASMIA!

Introducing a stunning modern single-story property in the heart of Erasmia, embodying luxury, convenience, and contemporary design. This practically brand-new home boasts three spacious bedrooms, each with its own en-suite bathroom, ensuring comfort and privacy for all occupants.

Upon entering, you'll be greeted by open living areas flooded with natural light, creating an inviting and airy atmosphere. Complimented by a fireplace to warm up the entire living area. There is a separate family room, surrounded by aluminum doors, works as an ideal entertainment room or a separate lounge. The centerpiece of the home is the modern farm-style kitchen, thoughtfully designed with sleek finishes, ample storage with its top-of-the-line cupboards, a gas stove, just perfect for both casual family meals and entertaining guests.

Step...

Features

Interior

Bedrooms	3
Bathrooms	3.5
Kitchens	2
Recep. Rooms	3
Studies	1
Furnished	No

Exterior

Garages	2
Carports / Parkings	4
Security	Yes
Dom. Accom.	0.5
Pool	No
Views	False

Sizes

Floor Size	365m ²
Land Size	1,100m ²