



Armaan Essa
0828088886
armaan@choprop.co.za



Fatima Ebrahim Mall
083 662 7863

fatimamall@choprop.co.za

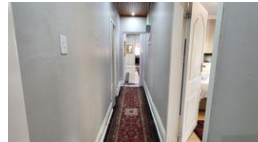
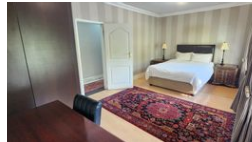
Contact Choprop Sales

0126534444
0126534444

146 Willem Botha Street
Wierda Park
0157



Web Ref RL14392



R3,450,000

 4  4

Monthly Bond Repayment R35,025.40

Calculated over 20 years at 10.75% with no deposit.

Transfer Costs R216,214.00 **Bond Costs** R47,840.00

These calculations are only a guide. Please ask your conveyancer for exact calculations.

Monthly Rates R1,792

DISCOVER TIMELESS ELEGANCE, MODERN LUXURY LIVING IN A SOUGHT AFTER LOCALE! CHRISTOBURG! ERASMIA!

Christoburg! Most desired location!

This modern single-story home in Erasmia boasts a spacious layout designed for comfortable living. As you enter, you're greeted by a foyer that leads into open-plan living area with the voluminous lounge, complimented with high ceilings and loads of natural light flowing into the spacious dining area. Featuring a sleek kitchen next to it and a cozy T.V lounge with sliding doors leading out to the covered patio & braai area overlooking the landscaped indigenous, water wise garden. The kitchen is equipped with state-of-the-art finishes and offers ample storage space, with a separate scullery equipped with a gas stove offering you the convenience when it is loadshedding.

The home offers four bedrooms, each with built-in cupboards, providing plenty of storage for the entire family. The...

Features

Pets Allowed		Yes			
Interior		Exterior		Sizes	
Bedrooms	4	Carports / Parkings	4	Floor Size	432m ²
Bathrooms	4	Security	Yes	Land Size	1,535m ²
Kitchens	1	Dom. Accom.	1		
Recep. Rooms	3	Pool	Yes		
Studies	1	Views	False		
Furnished	No				