



Vani Chatty  
0842649556  
vani@choprop.co.za

Contact Choprop Sales

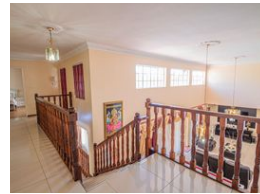
0126534444  
0126534444

146 Willem Botha Street  
Wierda Park  
0157



SOLE MANDATE

Web Ref RL24592



**R4,000,000**

 5
  3
  2

**Monthly Bond Repayment** R40,609.16

Calculated over 20 years at 10.75% with no deposit.

**Transfer Costs** R281,050.00 **Bond Costs** R51,610.00

These calculations are only a guide. Please ask your conveyancer for exact calculations.

comfort with sophistication

Welcome to this stunning double story face brick home, a true embodiment of comfort and sophistication. Boasting five generously sized bedrooms, accompanied by 3 bathrooms, this residence offers an unparalleled living experience.

As you step through the elegant front entrance, you are greeted by a meticulously designed interior that exudes homely charm and warmth. As you enter, a welcoming atmosphere lingers through the entrance, which illuminates the space that flows from the lounge on the left to the dining room on the right leading to an open plan T.V lounge. The kitchen is a culinary haven, featuring solid oak cabinets with the charm that offers ample storage space. A scullery is adjacent with all the appliance fittings for convenience. A door leads out to the back entrance of the home. The five bedrooms are havens of...

## Features

### Interior

Bedrooms	5
Bathrooms	3
Kitchens	1
Recep. Rooms	3
Furnished	Yes

### Exterior

Garages	2
Carports / Parkings	1
Security	Yes
Pool	Yes
Views	Yes

### Sizes

Land Size	2,865m²
-----------	---------

### Extras

solar system not included in price .