



Nadia Chetty
0797799222
nadia@choprop.co.za

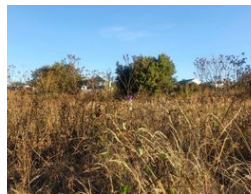
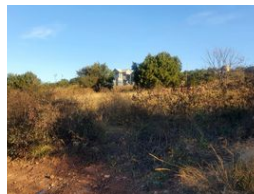
Contact Choprop Sales

0126534444
0126534444

146 Willem Botha Street
Wierda Park
0157



Web Ref RL31480



R1,595,000

Monthly Bond Repayment R16,192.90

Calculated over 20 years at 10.75% with no deposit.

Transfer Costs R48,635.00 **Bond Costs** R28,990.00

These calculations are only a guide. Please ask your conveyancer for exact calculations.

Monthly Levy R1,655 **Monthly Rates** R1,700

BUILD YOUR DREAM HOME IN THE PRESTIGIOUS ELDO RIDGE ESTATE

Why settle for someone else's vision when you can create your masterpiece?

This prime stand of 612m² offers you the opportunity to design and build your dream home from the ground up—exactly how you've always imagined it. Tucked away in a quiet cul-de-sac, on an interior street, the stand boasts tranquil views of the surrounding hill, providing the perfect setting for a bespoke luxury residence.

Located with the sought-after Eldo Ridge Estate, this stand comes with more than just location. Residents can enjoy access to superb amenities, including a clubhouse for private functions, a sparkling swimming pool, and safe, well-maintained play areas for children. The estate's superb 24-hour security and controlled access provide peace of mind, allowing you to focus on what matters most—building a home that suits your...

Features