



Nadia Chetty
0797799222
nadia@choprop.co.za

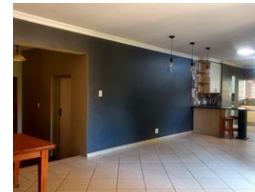
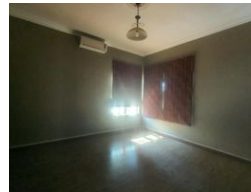
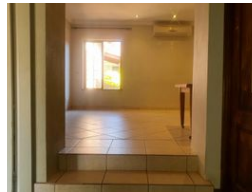
Contact Choprop Sales

0126534444
0126534444

146 Willem Botha Street
Wierda Park
0157



Web Ref RL31519



R3,150,000

4 3 2

Monthly Bond Repayment R31,448.97

Calculated over 20 years at 10.5% with no deposit.

Transfer Costs R179,020.00 **Bond Costs** R44,070.00

These calculations are only a guide. Please ask your conveyancer for exact calculations.

Monthly Levy R1,200 **Monthly Rates** R1,525

4 BEDROOM HAVEN OF COMFORT AND STYLE FOR SALE IN ELDO MANOR

This feature-packed home in a highly sought after, residential estate, offers the ultimate comfort, style, and convenience. With its impressive features and beautifully landscaped garden, this property is a true gem.

The home offers both an enclosed living room and open plan living areas perfect for family gatherings and entertaining. A stone clad feature- wall in these areas, adds a rustic yet modern touch. The spacious kitchen with separate scullery and laundry, is a great convenience, and makes meal preparation a breeze.

The ample-sized master ensuite, and two additional, sunny bedrooms, serviced by a shared bathroom, are all on the ground floor. A fourth, ultra-large, loft bedroom (also ensuite) with adjoining study is on the first floor.

The beautifully landscaped garden with its black marblite pool, fish pond,...

Features

Pets Allowed Yes

Interior

Bedrooms	4
Bathrooms	3
Kitchens	1
Recep. Rooms	3
Studies	1
Furnished	No

Exterior

Garages	2
Carports / Parkings	4
Security	Yes
Pool	Yes
Views	False

Sizes

Floor Size	325m ²
Land Size	675m ²