



Sivanandan
Govindasamy Packary
0824920583
siva@choprop.co.za

Contact Choprop Sales

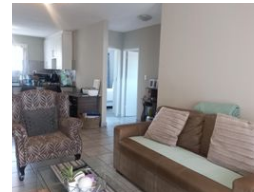
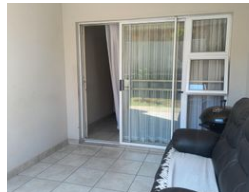
0126534444
0126534444

146 Willem Botha Street
Wierda Park
0157



SOLE MANDATE

Web Ref RL13834



R1,060,000

 2
  2
  1

Monthly Bond Repayment R10,761.43

Calculated over 20 years at 10.75% with no deposit.

Transfer Costs R32,749.00 **Bond Costs** R25,220.00

These calculations are only a guide. Please ask your conveyancer for exact calculations.

Monthly Levy R1,960 **Monthly Rates** R670

Calling all investors and first time buyers !!!

Make this investment opportunity yours to own today!!

As one enters one can find a spacious open plan kitchen, Space for electrical appliances, lots of cupboard space, breakfast nook, tiled, flowing into the dining room, lounge area and opening onto a open patio area overlooking the garden.

The main en-suite bedroom, built in cupboards, tiled and bathroom, tiled. The second bedroom, built in cupboards, tiled and sharing a bathroom, tiled.

The apartment offers a single garage, single covered carport, pre paid water and electricity. The unit is currently tenanted with a rental income.

The complex is in close proximity to shopping centers, Centurion Mall, schools, contributing to a well round community lifestyle. Its location in centurion places it within reasonable commuting distance to major business hubs in...

Features

Interior

Bedrooms	2
Bathrooms	2
Kitchens	1
Recep. Rooms	2

Exterior

Garages	1
Carports / Parkings	1
Security	Yes
Pool	No
Views	Yes

Sizes

Floor Size	115m²
------------	-------