



Veroshney Ramjas
0832091009
veroshney@choprop.co.za

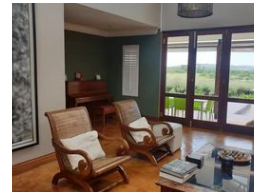
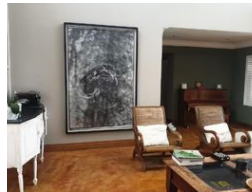
Contact Choprop Sales

0126534444
0126534444

146 Willem Botha Street
Wierda Park
0157



Web Ref RL29080



R5,700,000

 4  4.5  2

Monthly Bond Repayment R57,868.05

Calculated over 20 years at 10.75% with no deposit.

Transfer Costs R484,807.00 **Bond Costs** R65,785.00

These calculations are only a guide. Please ask your conveyancer for exact calculations.

Monthly Levy R2,800 **Monthly Rates** R3,857

Exquisite 4 en-suite-Bedroom Family Home with Breathtaking Views in Copperleaf Estate

Experience luxury living at its finest in this stunning single-story home perfectly positioned in the prestigious Copperleaf Golf & Country Estate. Offering 4 spacious en-suite bedrooms, 4.5 elegant bathrooms, and panoramic views, this property is the ultimate haven for families and entertainers alike.

Domestic Quarters

Step inside to discover a modern designer kitchen and beautifully finished bathrooms that blend style with functionality. The expansive open-plan living spaces flow effortlessly into the entertainment area and sparkling swimming pool, ideal for hosting guests or simply enjoying relaxed outdoor living.

Key Features:

4 Bedrooms | 4.5 Bathrooms

Gourmet kitchen with high-end finishes

Spacious entertainment area with built-in features

Features

Pets Allowed Yes

Interior

Bedrooms	4
Bathrooms	4.5
Kitchens	1
Recep. Rooms	3
Studies	1

Exterior

Garages	2
Carports / Parkings	2
Security	Yes
Dom. Accom.	1
Pool	Yes
Views	Yes

Sizes

Floor Size	386m ²
Land Size	1,384m ²