



Veroshney Ramjas
0832091009
veroshney@choprop.co.za

Contact Choprop Sales

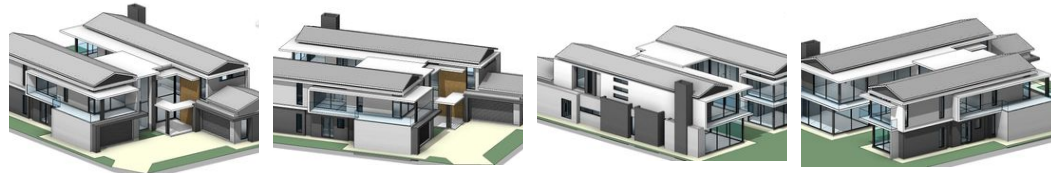
0126534444
0126534444

146 Willem Botha Street
Wierda Park
0157

FEATURED



Web Ref RL21292



R10,000,000

🏠 6 🚿 5.5 🚗 4

Monthly Bond Repayment R101,522.90

Calculated over 20 years at 10.75% with no deposit.

Transfer Costs R981,364.00 **Bond Costs** R84,785.00

These calculations are only a guide. Please ask your conveyancer for exact calculations.

Monthly Levy R2,900 **Monthly Rates** R3,150

Exquisite New Luxury Solar-Powered Home in Copperleaf Golf Estate

Nestled within the prestigious Copperleaf Golf & Country Estate, this extraordinary new residence offers a refined lifestyle of unparalleled luxury, modern elegance, and world-class amenities. Set for completion in December 2024, this architectural masterpiece spans over 565 square meters, boasting an abundance of sophisticated features designed for those with the most discerning tastes.

Copperleaf is a sanctuary of security and serenity, where peace of mind is paramount. The estate is equipped with 24-hour surveillance, featuring 60 high-definition security cameras, 8 kilometers of electric fencing, and a perimeter wall, all monitored by a centralized control center. Should the need arise, a rapid response vehicle is on standby at all times. In addition to its robust security, Copperleaf offers a wealth of premium...

Features

Pets Allowed	Yes		
Interior		Exterior	Sizes
Bedrooms	6	Garages	4
Bathrooms	5.5	Carports / Parkings	3
Kitchens	1	Dom. Accom.	1
Recep. Rooms	3	Pool	Yes
Studies	1	Views	Yes
Furnished	No		
			Floor Size 544m ²
			Land Size 755m ²