



Sivanandan  
Govindasamy Packary  
0824920583  
siva@choprop.co.za

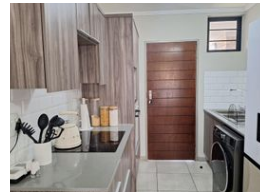
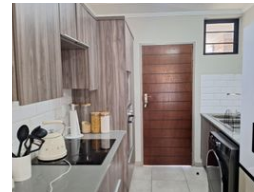
Contact Choprop Sales

0126534444  
0126534444

146 Willem Botha Street  
Wierda Park  
0157



Web Ref RL25650



**R999,000**

🛏 2 🚿 1

**Monthly Bond Repayment** R10,142.14

Calculated over 20 years at 10.75% with no deposit.

**Transfer Costs** R30,412.00 **Bond Costs** R23,335.00

These calculations are only a guide. Please ask your conveyancer for exact calculations.

**Monthly Levy** R1,300 **Monthly Rates** R555

Moern and stylish apartment in Amberfiel City!!!

Make this opportunity yours to own today!!!

Nestled in the heart of Amberfield City, this immaculate apartment offers contemporary living with a touch of elegance.

Upon entering, you are greeted by a stylish open-plan kitchen featuring sleek Caesarstone countertops, ample cupboard space, and room for essential appliances. The seamless flow from the kitchen into the spacious lounge and dining area creates a warm and inviting atmosphere, leading onto a private balcony-perfect for unwinding after a long day.

This home boasts two generously sized bedrooms with built-in cupboards, complemented by stylish tiled flooring throughout. The bedrooms share a modern full bathroom, thoughtfully designed for convenience and comfort.

The apartment comes with a dedicated carport and ample visitors' parking. Residents of this...

## Features

### Interior

Bedrooms	2
Bathrooms	1
Kitchens	1
Recep. Rooms	2
Furnished	No

### Exterior

Carports / Parkings	1
Security	Yes
Pool	Yes
Views	Yes

### Sizes

Floor Size	59m²
------------	------