

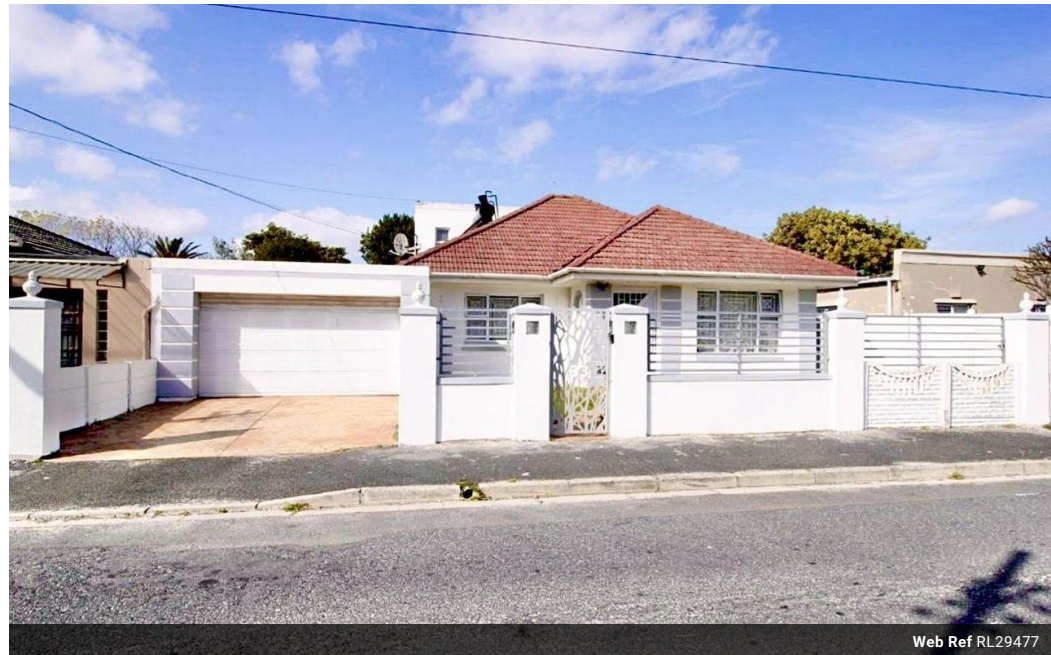


Shaazia Soomar  
0834602415  
shaazia@choprop.co.za

Contact Choprop Sales

0126534444  
0126534444

146 Willem Botha Street  
Wierda Park  
0157



Web Ref RL29477



**R2,649,000**

🛏 5 🚿 4 🚗 4

**Monthly Bond Repayment** R27,342.67

Calculated over 20 years at 11% with no deposit.

**Transfer Costs** R129,807.00 **Bond Costs** R40,300.00

These calculations are only a guide. Please ask your conveyancer for exact calculations.

### Delightful Family Home with Two Income-Generating Flatlets in Prime Lansdowne Location

Nestled in a desirable pocket of Lansdowne, bordering the prestigious suburb of Rondebosch East and Claremont, this well-maintained 3-5 bedroom residence offers a unique blend of comfort, convenience, and opportunity. Perfectly positioned with easy access to the M5, Kenilworth Centre, and within walking distance to esteemed schools, popular cafe's, and the best restaurants that the southern suburbs has to offer!

This home is ideal for a growing family seeking a welcoming community atmosphere.

Step inside to discover a spacious open-plan lounge and dining area that seamlessly flows into a well-appointed kitchen, complete with ample storage, a breakfast nook, and plumbing for a washing machine-an inviting space designed for family living and everyday practicality.

The main house features three generously sized bedrooms,...

### Features

#### Interior

Bedrooms	5
Bathrooms	4
Recep. Rooms	3

#### Exterior

Garages	4
Carports / Parkings	2
Dom. Accom.	1
Pool	No

#### Sizes

Land Size	450m²
-----------	-------