



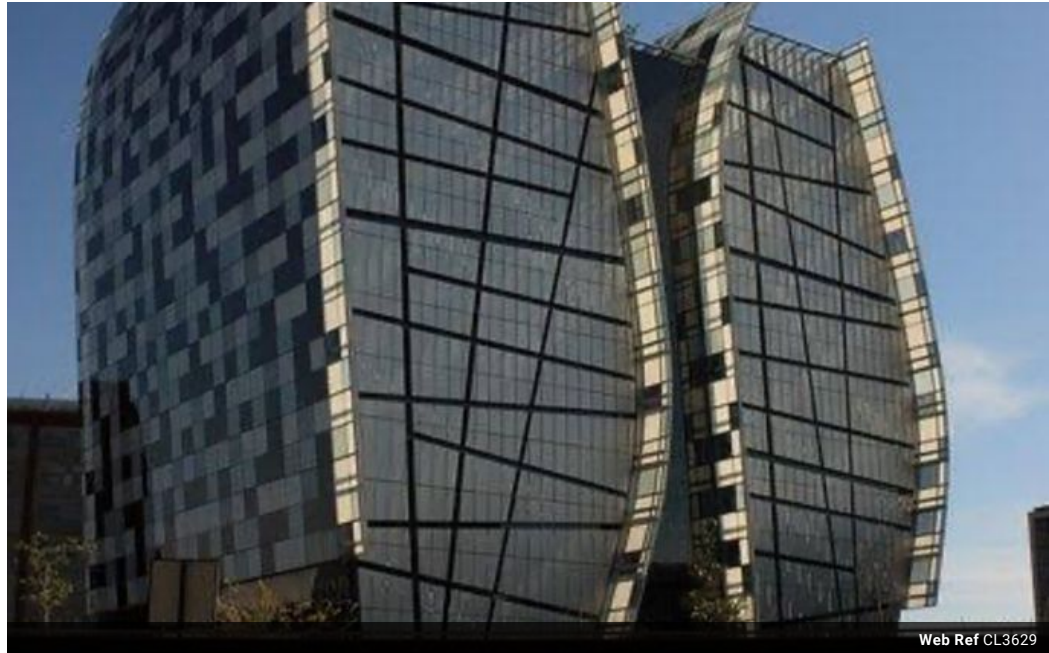
Wanda Madikizela
0724227395
wanda@choprop.co.za

Contact Choprop Rentals

012 6534444

146 Willem Botha Street
Wierda Park
0157

2,986m² Office To Let in Sandown



Web Ref CL3629







R245 per m²

Gross Monthly Rental R245 Excl. VAT

 1  1

The Towers office for rental in Sandown, Sandton

Key Features:

- **Prime Location:** Situated in the heart of Sandton's business district, The Annex offers easy access to major highways and public transportation, including the nearby Sandton Gautrain Station. 
- **Modern Amenities:** The building boasts a canteen for tenant convenience, backup water supply, and on-site generators to ensure uninterrupted business operations. It also features air conditioning and a robust 24-hour security system. 
- **Sustainability:** The Annex is a 5-star Green Building Council of South Africa (GBCSA) certified property, reflecting its commitment to environmental responsibility. 
- **Design and Accessibility:** The building comprises of 8 lifts servicing the premises, ensuring seamless accessibility. The layout is designed to enhance workflow efficiency and productivity. 

Features

Building Name	The Annex				
Zoning	Commercial				
Interior		Exterior		Sizes	
Air Conditioning	Yes	Security	Yes	Floor Size	2,986m ²
		Basement Parkings	1	Land Size	28,450m ²
		Open Parking Bays	1		