



Lucy Martha Matseba

0842790300

lucy@choprop.co.za



Libuseng Lillian Mokotleng

0824028574

libuseng@choprop.co.za

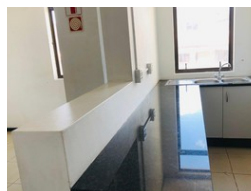
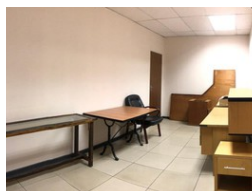
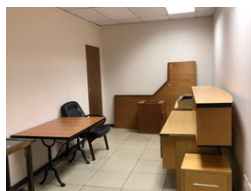
Contact Choprop Sales

0126534444
0126534444

146 Willem Botha Street
Wierda Park
0157



Web Ref CL525



R200 per m²

Gross Monthly Rental R3,000 Excl. VAT



0



0

Well-located office space priced from R190 per sqm and available immediately

The office park is highly visible and easily accessed from New Road or Olifantsfontein. It offers a space for a boardroom, Cafeteria for refreshments, 24-hour security and access control, as well as ample parking with basement, and open facilities available. These offices are well-positioned for convenience allowing easy access to the highways taking you to Pretoria, Sandton, CBD, and the greater Gauteng area.

Suitable for either single- or multi-tenant use, make the space to suit your business needs.

Features

Building Name
Zoning

5 New Road Office Park
Commercial

Sizes

Floor Size

15m²