



Libuseng Lillian Mokotleng
0824028574
libuseng@choprop.co.za

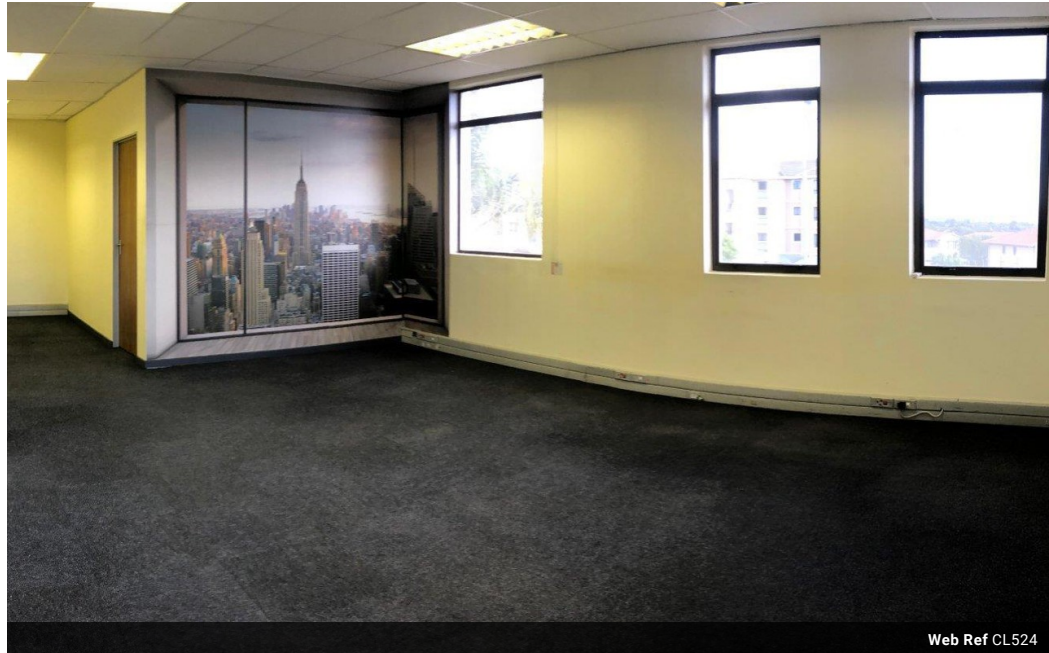


Lucy Martha Matseba
0842790300
lucy@choprop.co.za

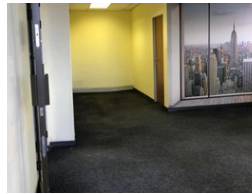
Contact Choprop Sales

0126534444
0126534444

146 Willem Botha Street
Wierda Park
0157



Web Ref CL524



R180 per m²

Gross Monthly Rental R15,000 Excl. VAT

 0  0

Well-located office space priced from R190 per sqm and available immediately

Well-located office space priced from R190 per sqm and available immediately

The office park is highly visible and easily accessed from New Road or Olifantsfontein. It offers a space for a boardroom, Cafeteria for refreshments, 24-hour security and access control, as well as ample parking with basement, and open facilities available. These offices are well-positioned for convenience allowing easy access to the highways taking you to Pretoria, Sandton, CBD, and the greater Gauteng area. Suitable for either single- or multi-tenant use, make the space to suit your business needs.

Features

Building Name	5 New Road Office Park
Zoning	Commercial
Sizes	
Floor Size	83m²
Extras	
Security	