

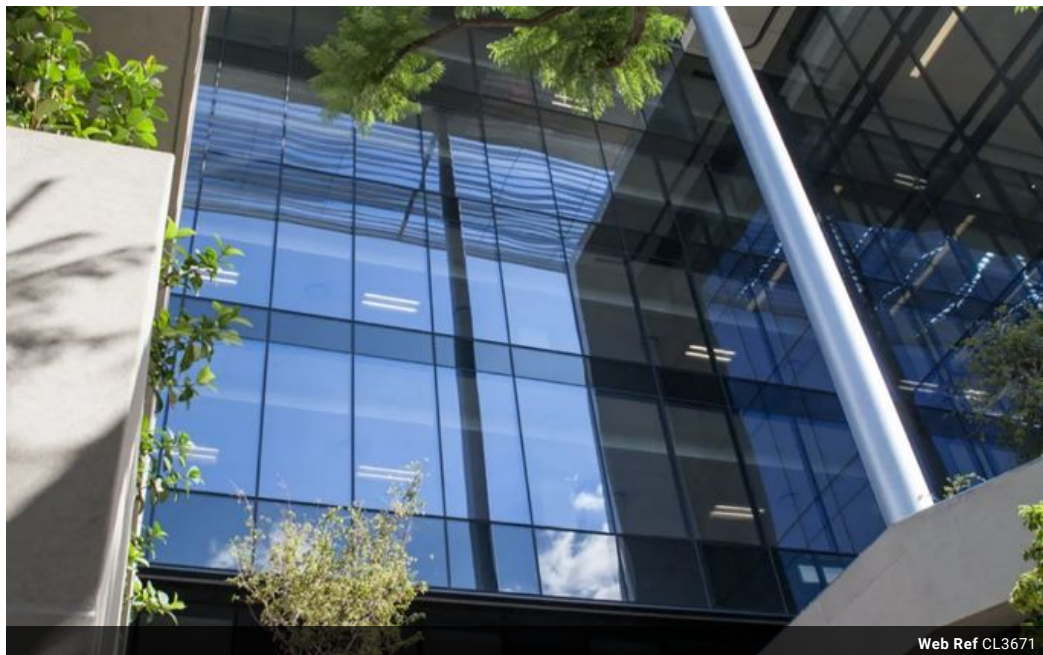


Wanda Madikizela
0724227395
wanda@choprop.co.za

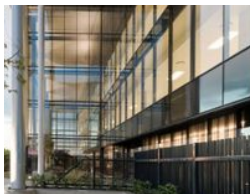
Contact Choprop Rentals

012 6534444

146 Willem Botha Street
Wierda Park
0157



Web Ref CL3671



R230 per m²

Gross Monthly Rental R230 Excl. VAT

 1  0

Jellicoe

30 Jellicoe is in the heart of the Rosebank CBD, one of Northern Johannesburg's most desirable business nodes. The building is easily accessed from the M1 highway via the Glenhove off-ramp and is within walking distance of the Rosebank Gautrain station.

It is conveniently located with access to all of Rosebank's shopping malls, banking facilities, restaurants and hotels. The building is home to the likes of TymeBank, Standard & Poor, Novare and Convergence. The office building design includes:

- * Six levels of offices with four levels of basement parking.
- * AAA grade spec and finishes throughout the building, particularly evident in the contemporary design of the lobbies and restrooms.
- * Ideal building orientation to ensure optimal natural light within the office plate.

Features

Zoning Commercial

Interior
Air Conditioning Yes

Exterior
Basement Parkings 1

Sizes
Floor Size 673m²
Land Size 6,000m²