

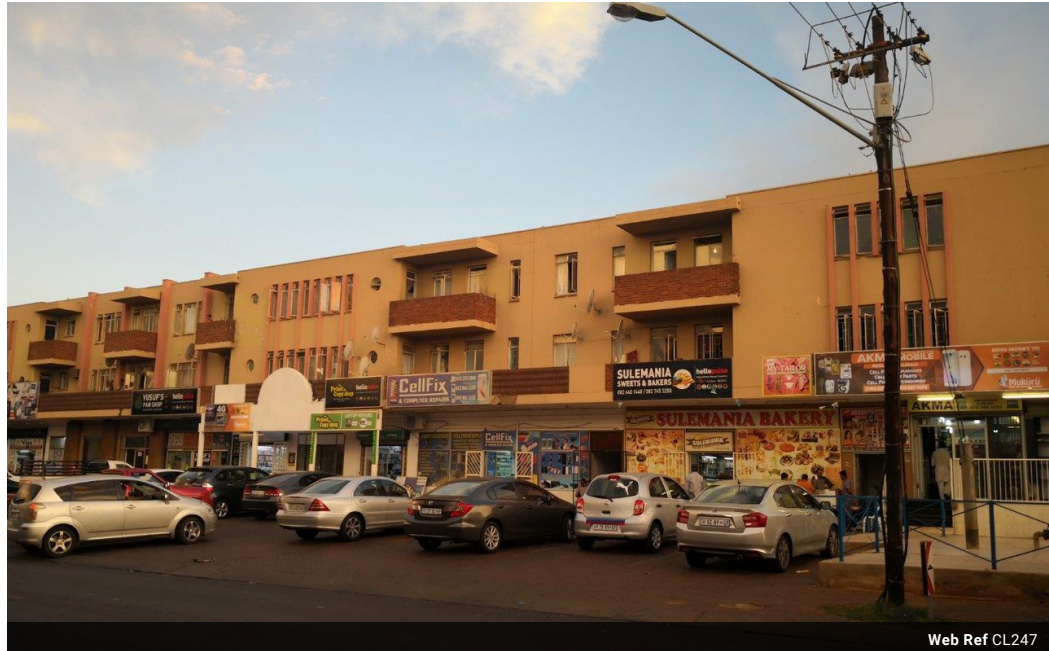


Mansukh Magan Chhiba
0765779222
mansukh@choprop.co.za

Contact Choprop Sales

0126534444
0126534444

146 Willem Botha Street
Wierda Park
0157



Web Ref CL247



R29,950,000

 0  50

Large Hotel Complex 8150sqm situated on a 3675sqm stand consists of nearly 50 single and ensuite bed

This unique hotel is perfectly located on a busy street in the heart of Laudium, a suburb on the western outskirts of the Pretoria CBD. The hotel is close to places of worship, schools and major roads. The hotel provides accommodation to nearly 50 individuals and their families in both ensuite (25) and single bedrooms (22) each with bathrooms and toilet facilities and in addition there are potential facilities for conferences, functions such as weddings and engagements, a cinema as well as safe and covered parking for several vehicles. There are also at least 15 long established businesses operating on the street fronts of the hotel ranging from an up market restaurant to hair salon, stationery and cellphone shops.

Features

Title	Leasehold		
Zoning	Commercial		
Exterior		Sizes	
Open Parking Bays	50	Floor Size	8,150m ²
		Land Size	3,675m ²

Extras

Well located, newly renovated. all the shops are rented and there is great potential for further development namely a large shop for an anchor store....